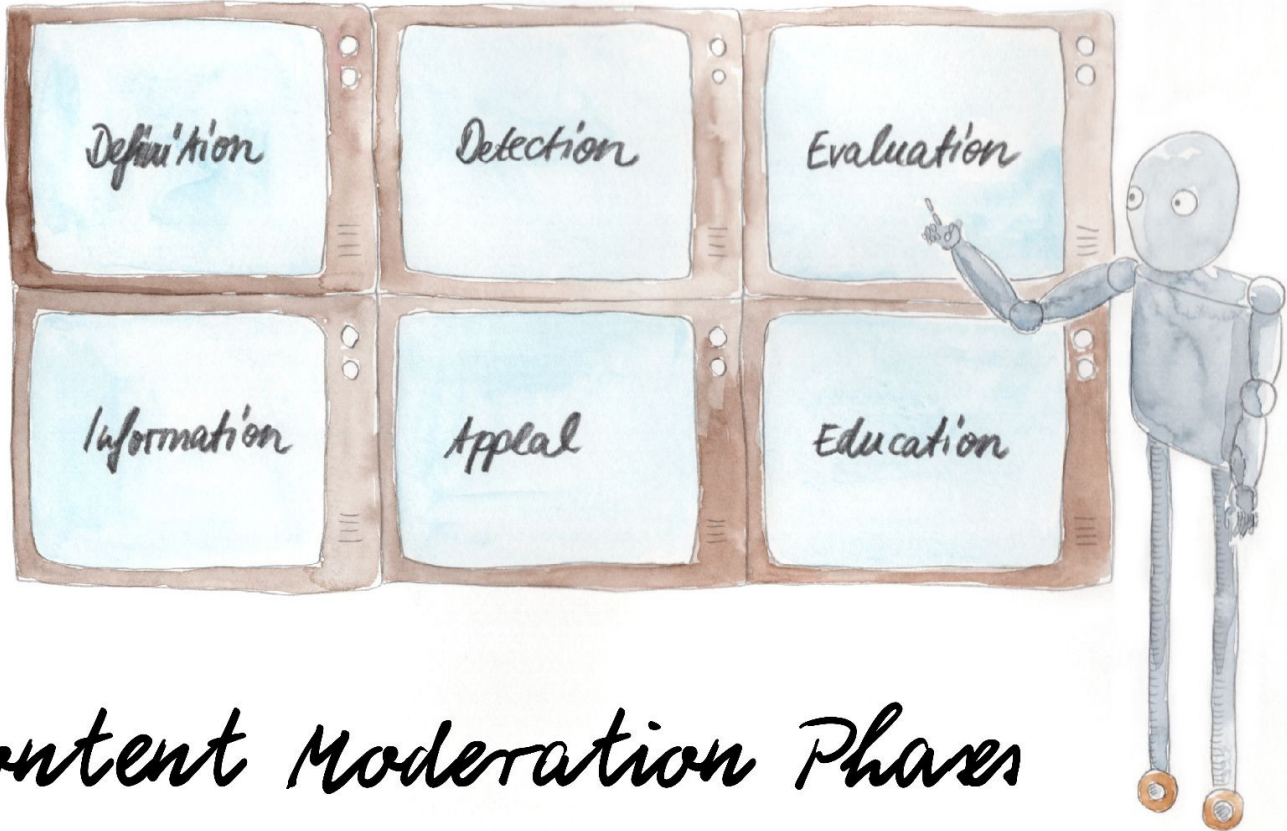


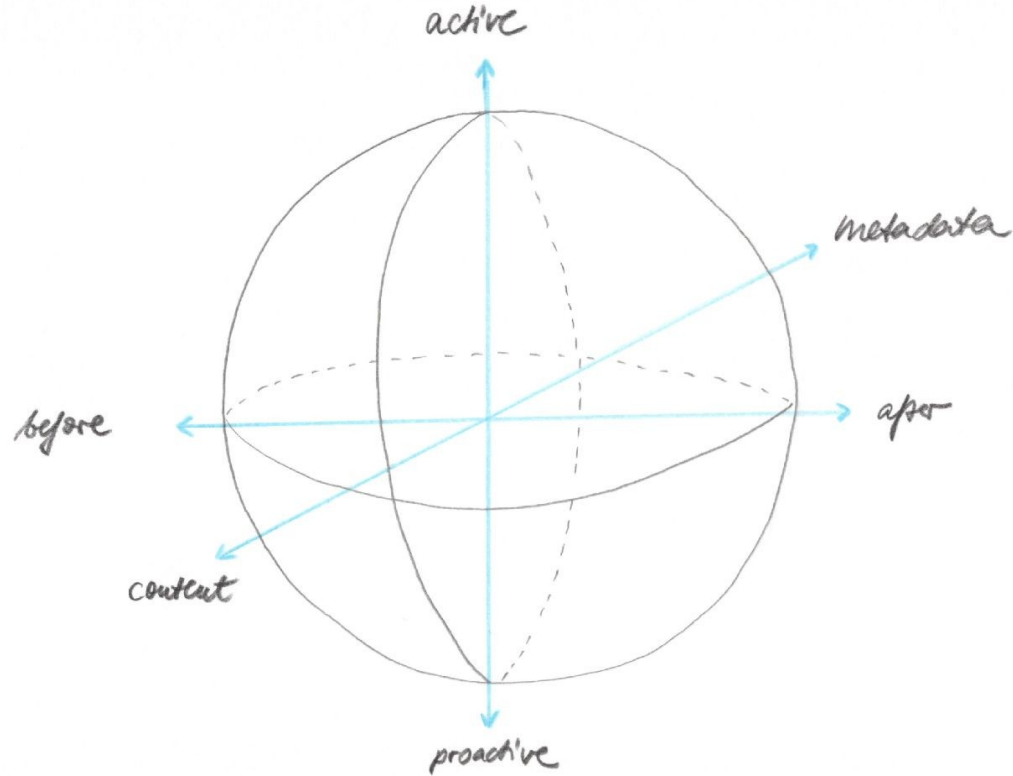
You can't always  
get what you want!  
But you get what you need

Center for Democracy & Technology (2021)  
Outside Looking In: Approaches to Content Moderation  
in End-to-End Encrypted Systems.

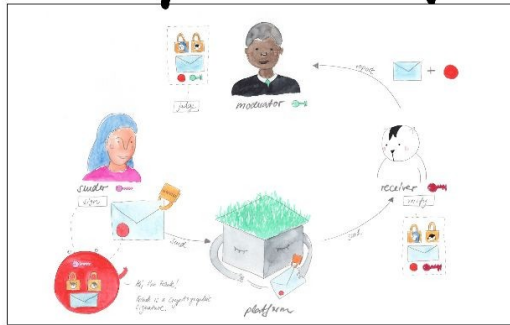


# Content Moderation Phases

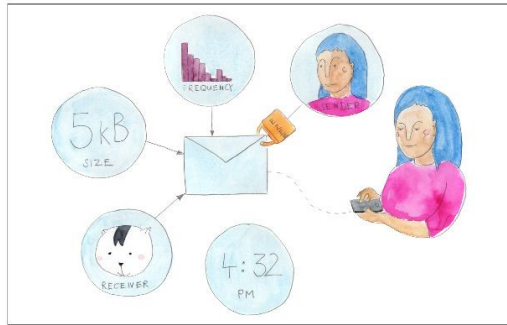
# Detection Phase of Content Moderation



# Proposals for Content Detection in E2EE



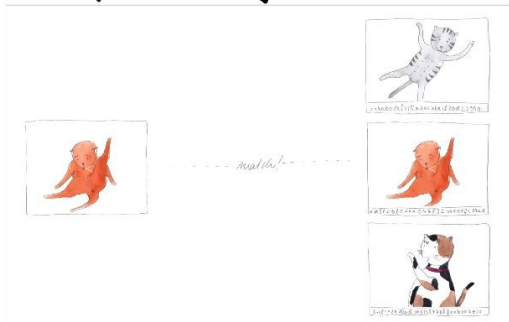
1. User reporting



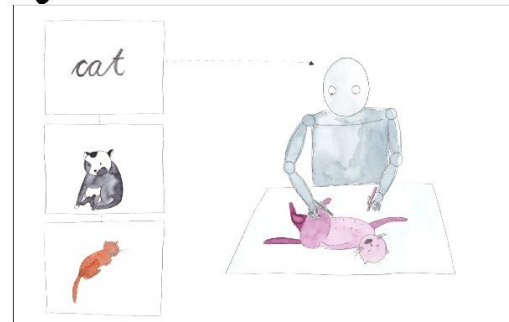
2. Metadata analysis



3. Traceability

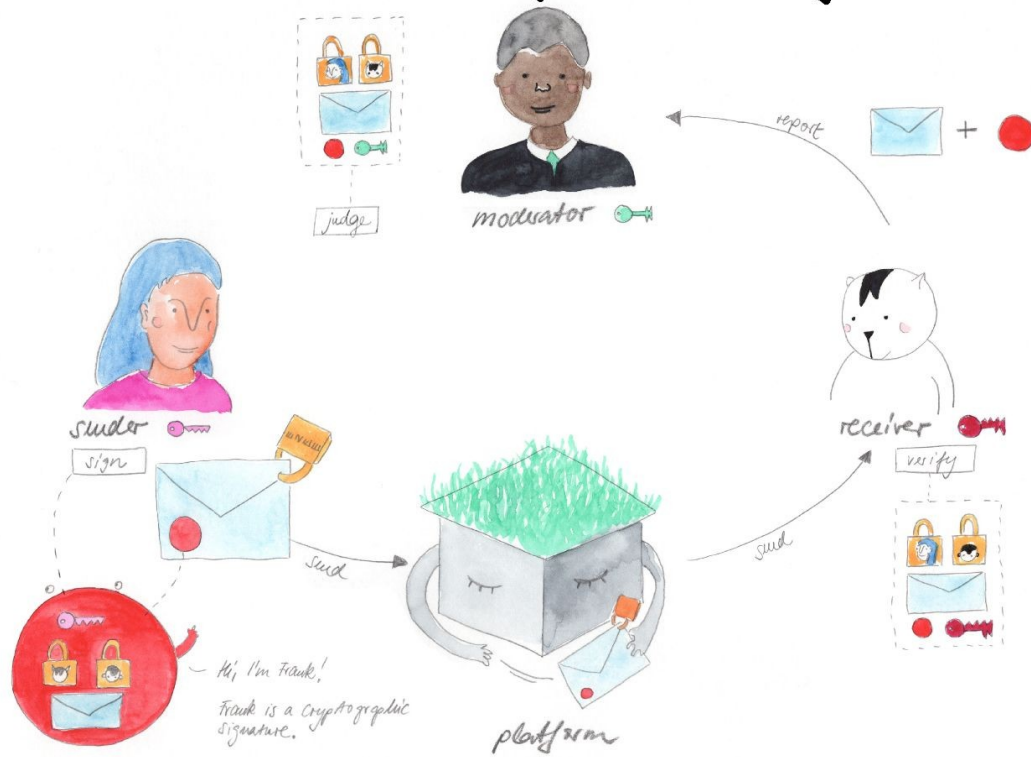


4. Perceptual hashing

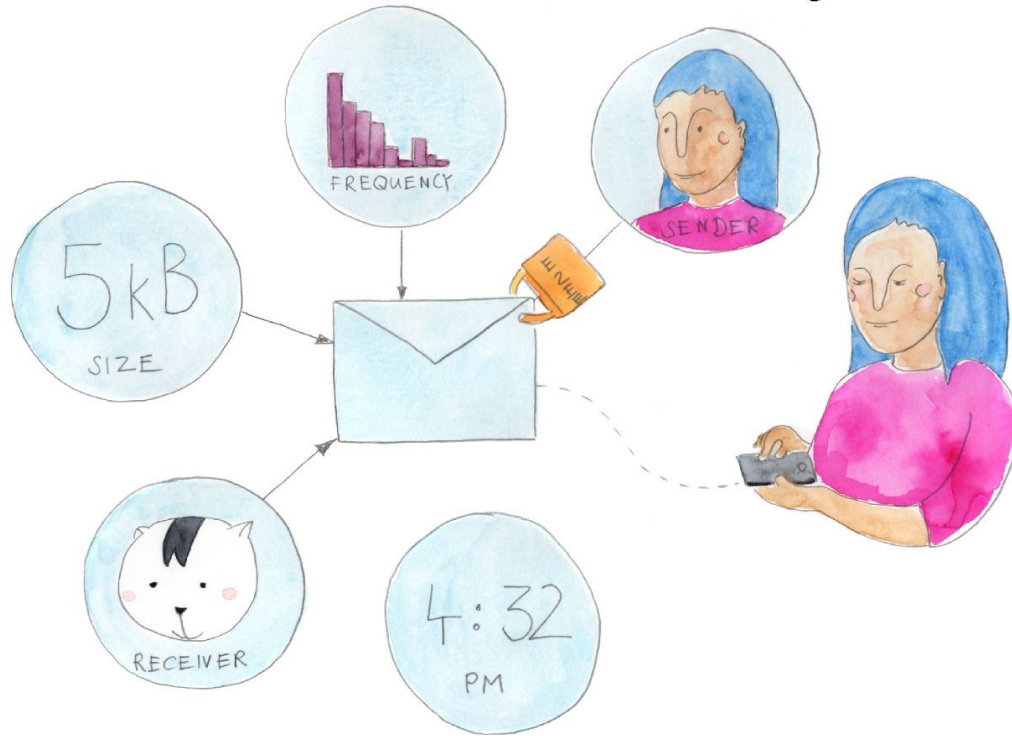


5. Predictive modeling

# 1. User Reporting

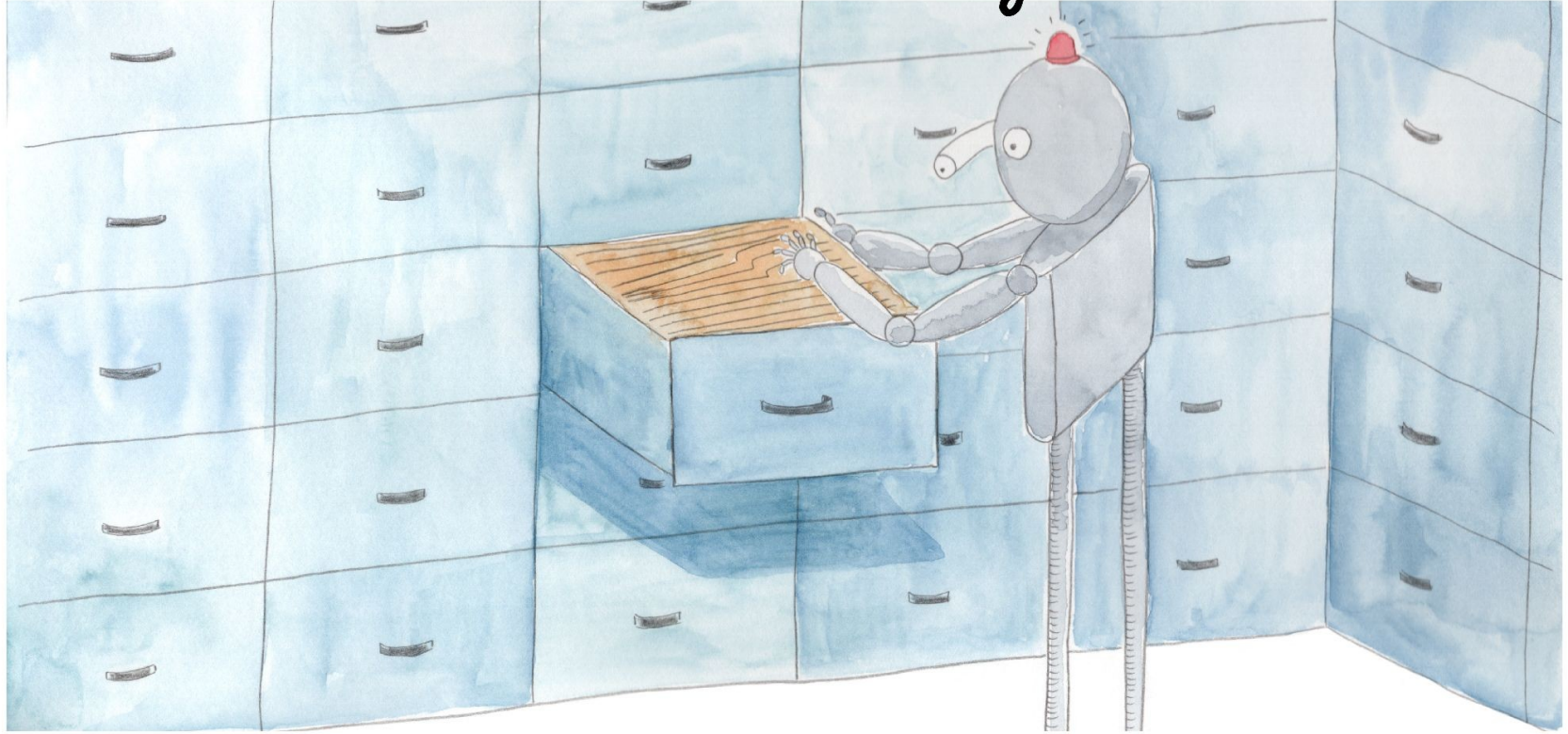


## 2. Metadata Analysis





### 3. Traceability



# 4. Perceptual Hashing



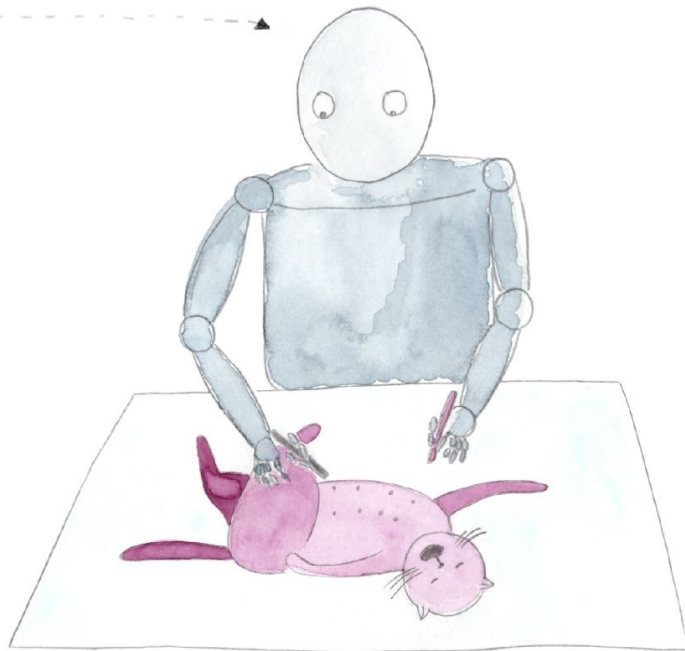
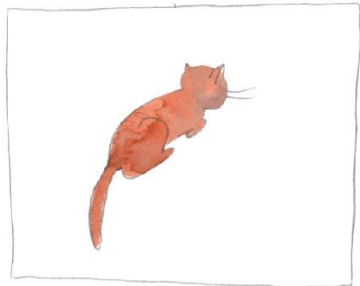
----- match! -----





# 5. Predictive Modeling

cat



# COMO + E2EE in Principle

- Consider content moderation, with E2EE systems as a subset.
- Focus on user agency and user experience.
  - To avoid backdooring, E2EE implementations **MUST NOT**:
    - Leave the app, OS, or device
    - Train data learning models.
    - Invoke third party resources without opt-out.
    - Force local logging.
    - Silently roll back deniability, perfect-forward secrecy
- Explain what E2EE features users can rely on, opt for, and the trade-off.