

# Enabling Product Scalability through Load Testing

Engineering

Bloomberg

SREcon24 EMEA  
October 30, 2024

Monica Baluna & Ehab Tawfik  
Software Engineers

[TechAtBloomberg.com](https://TechAtBloomberg.com)

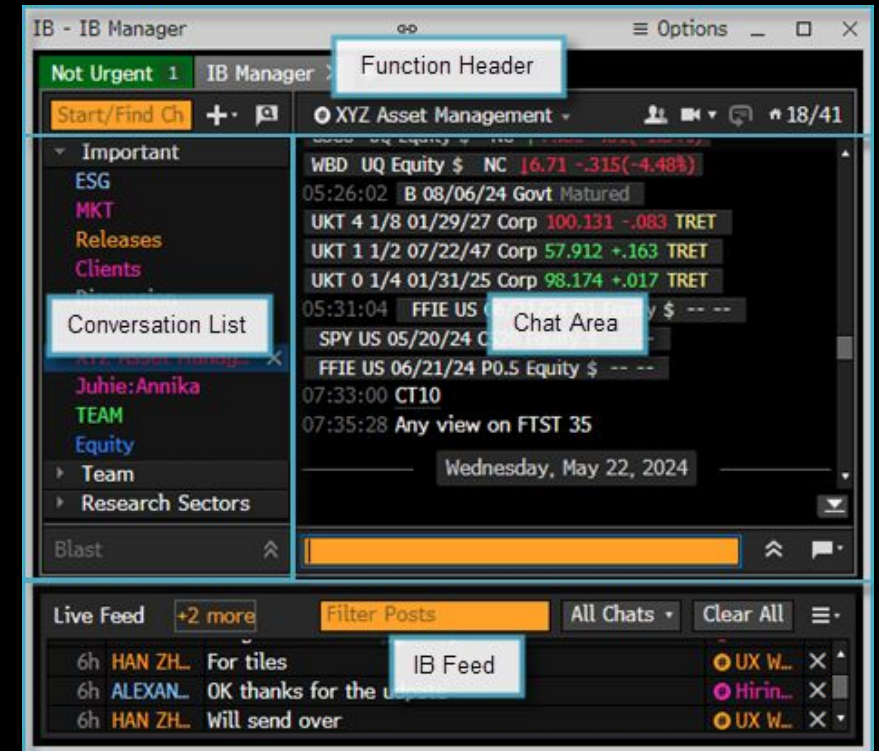
# Agenda

- Introduction to our system and Bloomberg
- Planning the load test
- The testing journey
- What we learned



# Intro: Meet IB

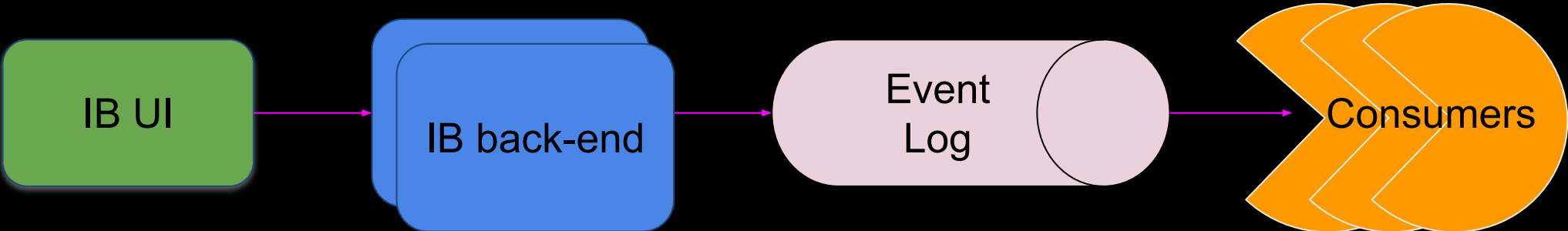
- What is Instant Bloomberg (IB)?
  - Instant messaging feature of the Bloomberg Terminal
  - Used by financial professionals
  - Provides multiple integrations with Bloomberg data and analytics



# Group Chats: New features

- New group chat released internally, but with limited size of groups
- What we wanted to achieve:
  - Migrate the old chats to new chats
- How to get there:
  - Measure and test system performance

# System internals



# The Test Plan

[TechAtBloomberg.com](https://techatbloomberg.com)

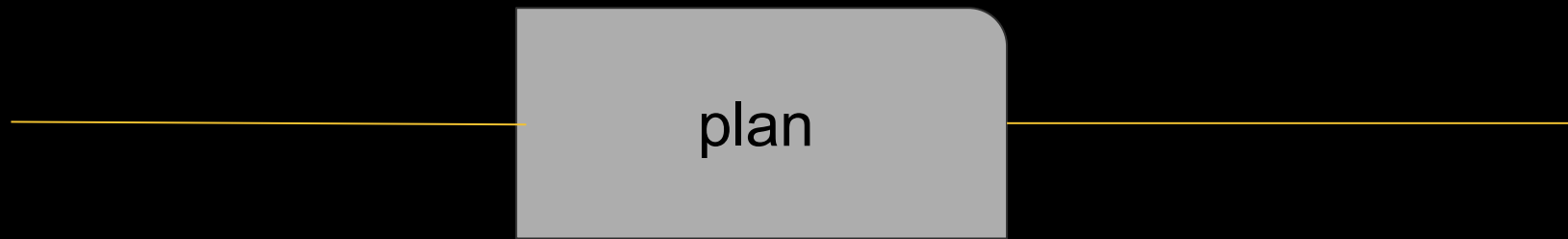
© 2024 Bloomberg Finance L.P. All rights reserved.

**Bloomberg**

Engineering

# We needed a plan

- What exactly do we test?
- How can we tell a test was successful?
- How do avoid impact on real users?



# Test plan: What workflows to test

- Test migrating Old Chat to New Chat
  - One-button push
  - Create new room
  - Migrate users and configurations
- A lot of the workflows use common APIs between the Old and New chats
  - Rely on existing monitoring to catch issues in the shared workflows



# Test plan: Defining success metrics

- Defining success metrics
  - Add SLOs specific to the workflow we're testing: (e.g., 99% createNewChatRoom < 3s)
  - All the other SLIs need to stay within bounds

# Test plan: Isolating the traffic

	Docker/Dev	Beta
Isolation	High	Medium
Accuracy	Low	High

- Depends on what part of the system is under test
  - One component (e.g., one service, one UI client)
  - Multiple back-end components interacting
  - The whole system end-to-end
- In our case, the staging environment
  - Include off-switch / recovery in your plan

# Test plan: Review

- Reviewing the plan with stakeholders
  - Identify the business and engineering stakeholders and review the plan with them early
  - Have clear instructions for running the actual test
  - Include links to the dashboards to follow during the test
  - Announce any scheduled tests

# The Testing Journey

**TechAtBloomberg.com**

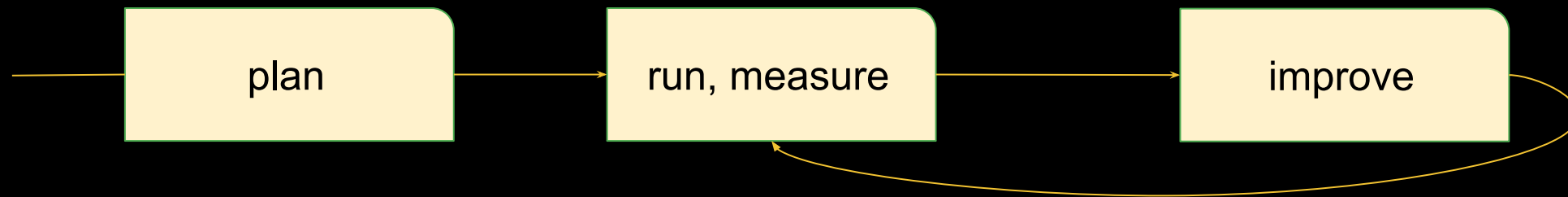
© 2024 Bloomberg Finance L.P. All rights reserved.

**Bloomberg**

Engineering



# It's time to run 🏃



# Testing the back-end: Run 🏃

- Script sends requests and monitors response times
  - Create an Old Chat room
  - Add n users to the room
  - Send request to migrate Old Chat room to New Chat room
  - Record processing time in our telemetry platform

# Testing the back-end: Monitoring

- Create dashboards that track all of the SLIs
  - Grafana, aggregated logs
  - Monitor dashboards from our SRE team for the existing workflows
  - Add our own dashboards for the new workflows



Source: <https://grafana.com/grafana/>

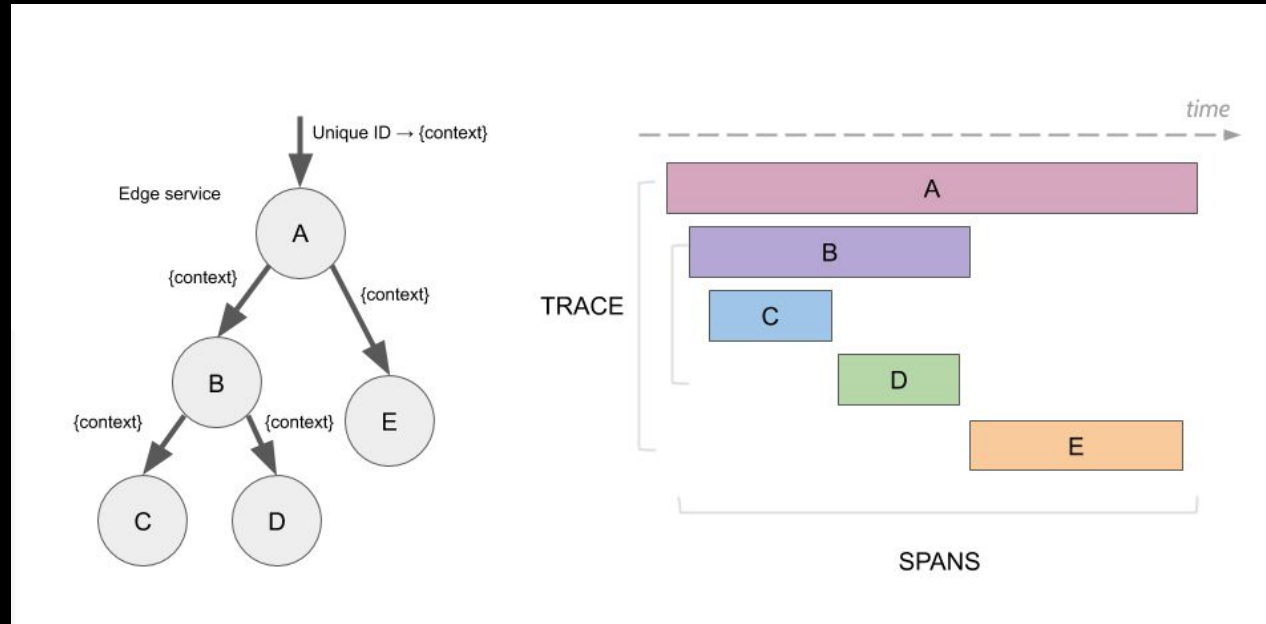
*“Any improvements made anywhere besides the bottleneck are an illusion.”*

*- Gene Kim, Author  
“The Phoenix Project: A Novel About IT, DevOps, and Helping Your Business Win”*



# Testing the back-end: Monitoring++

- Use distributed trace for more complex systems
  - Track an event / request through all its hops in the system (requests, DB accesses, Apache Kafka consumers, etc.)



Source: <https://github.com/rbaumgar/otracing-demo-app/blob/master/OpenTracing.md>

# Testing the back-end: Improve 🔥

- Identified back-end bottlenecks
  - Requests that needed to be batched together
  - Requests that needed to be split in smaller chunks
  - Sync vs. async processing

# We hit our success metrics!



**TechAtBloomberg.com**

© 2024 Bloomberg Finance L.P. All rights reserved.

**Bloomberg**

Engineering



**Thank you for coming to our  
SREcon talk!**

Just joking...

We're not done.

**TechAtBloomberg.com**

© 2024 Bloomberg Finance L.P. All rights reserved.

**Bloomberg**

Engineering



# Let's put our tests to test

- Try it out with internal users
  - Migrated a few Old Chat rooms to new chat rooms
  - Surprise! When users are added to the room, they immediately start interacting with it:
    - Open and read the room content
    - Post in the room, react to posts
  - The added traffic from these interactions was not covered by the tests!
  - Some services were negatively affected by the extra load

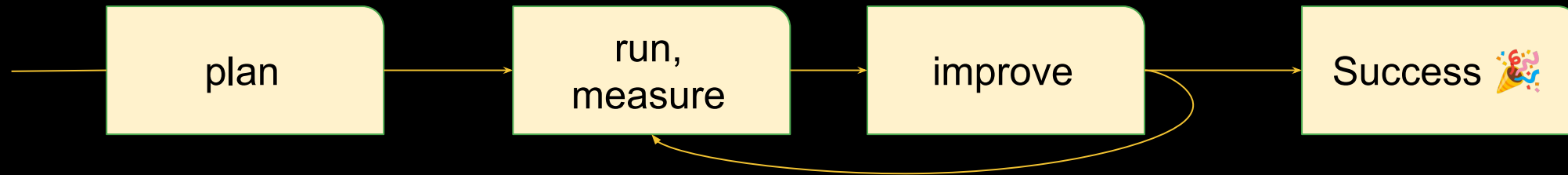
# Testing the system end-to-end

- Updated plan:
  - Test the whole system end-to-end from the UI
  - Simulate more complicated user workflows (sequences of actions)
- Harder to set up – You need a fleet of UI clients running in parallel
  - We had this infrastructure available in Bloomberg, running on VMs
- Ran UI clients in different VMs
  - Reproduced scenarios from experiments with internal users
  - Found the final bottlenecks 🎉

# Our positive outcomes

Fast forward:

- Achieved test success metrics ✓
- Reached our business goal: **migrate all the Old Chats to New Chats** ✓✓



# Key Takeaways

[TechAtBloomberg.com](https://www.techatbloomberg.com)

© 2024 Bloomberg Finance L.P. All rights reserved.

**Bloomberg**

Engineering



# What we learned

- In a world of event-driven and microservice architectures...
  - It can be hard to find the bottlenecks
  - Trivial changes can result in massive consequences (both good and bad)
- Plan the test and review it with stakeholders
- Have clear success metrics
- Isolate the test traffic and have safeties in place
- Make running the tests as easy as possible
  - Make monitoring the results just as easy
  - Consider running the tests periodically

**Thank you!** (for real this time)

<https://www.bloomberg.com/careers>

## Contact Us

**Monica:**

[mbaluna@bloomberg.net](mailto:mbaluna@bloomberg.net)

<https://linkedin.com/in/monica-maria-baluna>

**Ehab:**

[ehabtawfik@bloomberg.net](mailto:ehabtawfik@bloomberg.net)

<https://www.linkedin.com/in/tawfikehab>

**TechAtBloomberg.com**

Engineering

Bloomberg